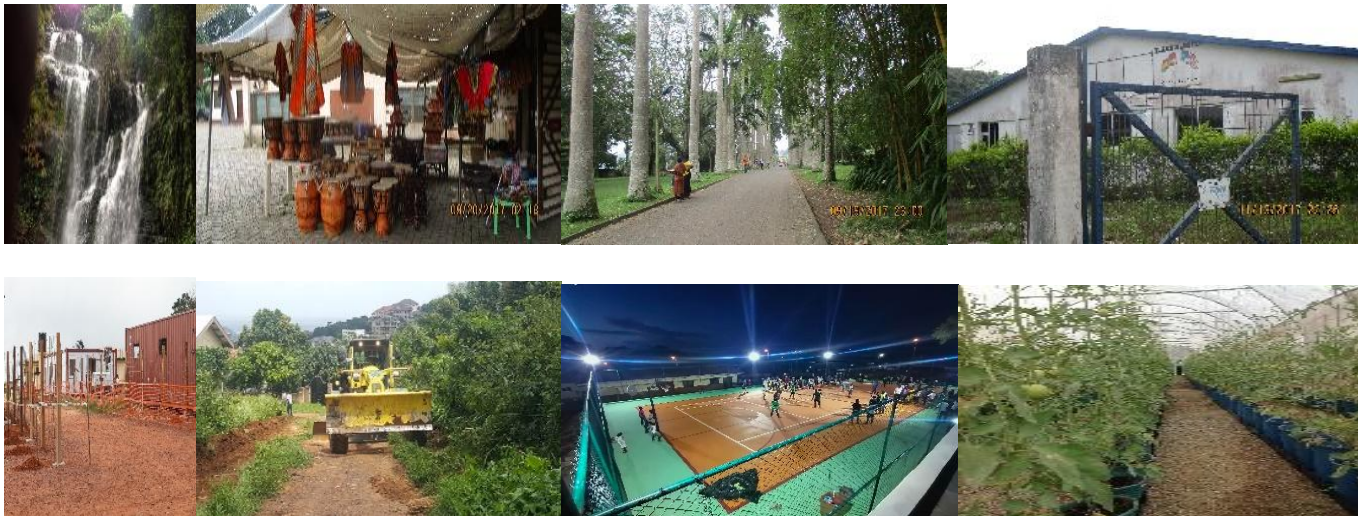




AKUAPEM SOUTH MUNICIPAL ASSEMBLY

COMPOSITE ANNUAL ACTION PLAN

2026



COMPOSITE ANNUAL ACTION PLAN – 2026

OBJECTIVE: 1. Improve connectivity and reduce transport costs **2.** Boost credit access for local traders **3.** Create an enabling agribusiness Environment

PROGRAMME: ECONOMIC DEVELOPMENTS

S/N	PROJECTS/PROGRAMMES	LOCATION	TIME FRAME				COST						PROGRAMMES STATUS		IMPLEMENTATION INSTITUTION/DEPARTMENT		
			Q 1	Q 2	Q 3	Q 4	GoG			DACF	IGF	OTHERS GPSNP DACF/RFG, SIF, MAG	NEW	ONGOING	LEAD	COLLABORATING	
							CENTRAL GOV'T TRANSFERS	GETFUND	DEPARTMENTAL TRANSFERS								
1.	Implement activities of GPSNP	Municipal-wide.								40,000.0 ^{CF}						MAD, GPSNP	MA, Co-operatives Unit
2.	Renovate and revamp the Akwakupom palm oil processing centre (LED)	Akwakupom									50,000.00					MAD	MA
3.	Organize Annual RELC planning session	Municipal wide								4,000.00	2,000.00	1,500.00 MAG				MAD	MA
4.	Provide direct extension services to farmers/FBOs (including Women and PWLDs) through regular home and farm visits and training for 5 FOB groups in dry season.	Municipal wide								12,627.00	3,250.00	50,000.00 MAG				MAD	A/Cs/MA AEAAs
5.	Conducts training for 5 agro Input dealers	Municipal wide								500.00	500.00	1,500.00 MAG				MAD	MA

	on agrochemical handling and protection and 30 farmers on safe use of agrochemicals in 11 operational areas to reduce post harvest losses													
6.	Construction of 24 hour economy model market.	Amanfo-Aburi						5,117,816.20					MWD	MA
7.	Construction of 2 no. 10 units market stalls	Fahiako Otiakrom						65,000.00	50,000				MWD	MA Assembly members
8.	Establishment of a Poultry Farm.	Pokrom						700,000.00CF	100,000.00				MA	MAD
9.	Conduct disease surveillance, vaccinate local poultry, ruminants on PPR, and other domestic animals .	Municipal-wide						3,500.00	5,250.00	6,000.00 MAG			MAD	A/Cs/ MA
10	Conduct training for farmers on improved poultry and pigery feed formulation, animal housing, catfish and tilapia production, climate-smart agriculture, and best management practices .	Municipal-wide						1,250.00	2, 125.00	3,750.00 MAG			MAD	MA
11.	Organize training for 90 women farmers on altenative livelihood, occupational safety and food hygiene .	Municipal-wide						1,500.00	500.00	2,000.00 MAG			MAD	MA
12.	Organize and train women groups,	Aburi							20,000.00	5,000.00 GPSNP			BAC	Agric Cooperative

	artisans and SMEs on income generating activities (Baking, bead making, soap making) and managerial skills, other related financial literacy programs and kaizen training for micro, small and medium scale enterprises.													
13.	Sensitization of communities on cooperatives and 20 farmers and FBOs on group formation to promote agriculture and train small medium scale farmers.	Aburi							9,000.00				Co-operatives Unit	BAC & other stakeholders
14.	Develop one tourist site and facilitate other tourism and business development related activities to boost the local economy and create jobs (LED)	Municipal wide						250,000.0 ^{CF}	90,000.00				MA	MTCCA
15.	Organize trade fair during the Aburi Odwira Festival	Aburi							80,000.00				MA	BAC Cooperative
SUB-TOTAL										6,196,193.20	412,625.00	919,750.00	7,528,568.20	

OBJECTIVE: 1. Ensure equitable, affordable and sustainable water supply services for all. **2.** Enhance equitable access to and participation in quality education at all levels. **3.** Ensure equitable, affordable and quality universal health coverage **4.** Promote efficient and sustainable waste management

PROGRAMME: SOCIAL DEVELOPMENT

S/N	PROJECTS/PROGRAMMES	LOCATION	TIME FRAME				COST						PROGRAMMES STATUSES		IMPLEMENTATION INSTITUTION/DEPARTMENT	
			Q 1	Q 2	Q 3	Q 4	GoG			DACF	IGF	OTHERS GPSNP DACF/RFG, SIF, MAG	NEW	ONGOING	LEAD	COLLABORATING
							CENTRAL GOV'T TRANSFERS	GET FUND	DEPARTMENTAL TRANSFERS							
16.	Complete the construction of 1.No. CHPS compound	Ahyiresu								500,000.00					MWD	MA, MHD
17.	Construction of a 500 seater capacity multi-purpose community centre to include 2 mini conferences 5 shops 2 libraries /Exterior works 1 toilet facility	Aburi										500,000.00 DACF RFG			MWD	MPCU, EPA, Assembly,Members, Mun. Fire Service, Municipal Police Service .
18.	Construction of 4.No. CHPS centers with a mechanized Borehole and other ancilliary facilities	Obodan Fahiakor/Muntukwa, Adjenasi Piem, Obosono								2,900,000.00		200,580.00 DACF/RFG			MWD	MA, MHD

	Constrction of ICT centre at Konkonuru	Kononuru							400,000.00					GES	MWD
19.	Facilitate the availability of IEC materials and support education and promotion of health issues and interventions at all levels	Municipal wide							15,000.00					GHS	MHD,MA
20.	Public sensitization on Ambulance Operations, organize simulation exercise and train schools and other institutions on CPR	Municipal-wide								6400.00				Abulance	MA MHD
21.	Monitor and implement folic acid distribution in communities and schools	Akuapim South								2,000.00	2,000.00			GHS	MA
22.	Drilling, mechanization and extension of 5 No. boreholes with 4 water source points each.	Pokrom, Adamorobe, Berekuso, Apentem, Otiakrom.							797,126.50					MWD, WATER	MA
23.	Construction of small water systems in 4 communities	Beseasi, Adamorobe, Berekuso, Aburi Market									1,137,620.00	DA CF/RFG			
24.	Drilling of 5 No. Boreholes	Obotweri, Agyementi, Oboadaka, Dago, Fahiako,							90,000.00					MWD, WATER	MA
25.	Repair and Maintenance of	Municipal-wide							220,000.00 ^C F	80,000.00				MWD, WATER	MA

	boreholes in 20 communities														
26.	Train WATSAN Committee members to undertake monitoring of water and sanitation activities in 25 communities	Municipal wide							80,000.00	20,000.00				MEHU	MA, WATSAN committee
27.	Inspection of dwelling homes, schools, health facilities hospitality centres (hotels/guest houses), eateries and drinking bars to intensify sanitation law enforcement and compliance. And monthly domiciliary inspection in communities	Municipal-wide								11,625.00				MEHU	Assembly Members, Chiefs, Head teachers, Comm'ty members, Market women,
28.	Facilitate and implement Social Protection programs for households in communities	Municipal wide								22,500.00	10,000.00			SWCD	MA, Akuapi m rural bank /MA
29.	Implement community LED total sanitation (CLTS) and organize quarterly environmental sanitation day in the communities	Municipal-wide							12,000.00					MEHU	Zonal council officers, field facilitate teams, MA
30.	Undertake Sanitation Improvement and	Municipal-wide							2,000,000.00	250,000.00				MA/MEHU	Zoom lion , MWD

	management activities in the municipality														
31.	Construction of 20 Seater WC Toilet facility for boys and girls with Mechanised Borehole	Aburi Presby Secondary Technical school and Aburi Presby primary						300,000.00	300,000.00	400,000.00 DACF-RFG			MWD GES	MA	
32.	Initiate and support 50 Households to construct toilet facilities	Municipal wide						258,150.00	100,000.00	250,000.00			MA		
33.	Undertake environmental enhancement programme (air quality control, noise pollution control, land restoration/reclamation, environmental education)	Municipal Wide							8,000.00				MEHU	MA Schedule Officer	
34.	Undertake waste management activities involving the evacuation of 10 No. refuse dumps and maintenance of final dumping sites	Apembrom Adamorobe Otiakrom Nsakyee and other selected communities						447,126.48	20,000.00				MEHU /MWST	MA	
35.	Construction of drains and disilting of gutters	Apembrom. Gyankama Konkonuru and other selected communities						300,000.00	20,000.00				MEHU /MWST	MA	
36.	Completion of 500m U-drain storm	Aburi Ahwerase						801,637.00 GoG					MWD	MA	

37.	Monitor & facilitate CHMC meetings and strengthen community engagement at all CHPS zone levels	All CHPs zones							4,000.00	2000.00				MHD	MA
38.	Monitor and supervise the activities of Three (3) NPOs, FBOs and CBOs.	Municipal-wide							1,000.00	1,000.00				DSW/CD	MA/ Churches, Mosques, CBOs,FBOs ,NGOs
39.	Conduct skills development and Economic support programs for PWDS and the Vulnerables.	Municipal Wide							60,000.00					SW/CD	MA ICDP
40.	Sensitize 10 communities on gender based violence, equality, equity, child abuse and teenage pregnancy.	Municipal Wide							2,000.00	1,000.00	1,000.00			SWS/CD	MA, NGOs,GES, Health, CSO
41,	Undertake community sensisitization programmes in 25 selected communities prone to drug abuse and teenage pregnancy	Municipal Wide							40,000.00					MHD	MA, SWCD, GES
42.	Identify, register and support Persons With Disabilities (PWDs)	Municipal Wide							4,000.00	3,500.00				MA	SW/CD DFMC, Traditional Authority

43.	Construction of 1no. 6 unit classroom blocks with 8 seater KVIP	Pakro (\Adjenasi piem R/C basic school)								600,000.00 SIF			MWD	GES
44.	Construction of 2no. 3 unit classroom blocks with 8 seater KVIP	Otiakrom Asong Yawkrom							650,000cf 650,000cf				MWD	GES
45.	Completion of legacy projects	Obotweri							2,000,000.00	200,000.00			SIF, MWD	MHD
46.	Construction of Cometary										1,400,000.00	DA CF/RFG	DPAT,MWD	MEHU,MHD
47.	Construction of 3 no. 2 unit KG block with urinals for boys and girls	Otopa-yaw, Agyanoa Adamorobe							200,126.48	DACF	1,800,000.00	DACF/RFG	MWD	MA,GES
48.	Construction of 2 no. 6 unit classroom block with ancillary facilities, office, staff room, store and 2 urinals for boys and girls each	Aburi Demonstration School, Otiakrom							1,000,000.00	DACF	1,850,000.00	DACF/RFG	MWD	MA,GES
49.	Expansion of Anamenampa KG block and basic school, and Pokrom Nsabaah primary school	Anamenampa KG , Pokrom Nsabaah							800,000.00				MWD	MA,GES
50.	Conduct medical screening/certification for atleast 95% food and drink vendors	Municipal-wide								6,000.00			MEHU	MHD, Assembly members, Unit committee members, Food/Drink vendors

51.	Sponsorship for brilliant but needy students (Education Fund)	Municipal-wide							40,000.00 ^{CF/MP CF}	45,000.00				MA	GES/Member of Parliament ,M/A
52.	Promote gender mainstreaming and Equity among JHS pupil	Municipal-wide							8,758.00					GES	SWCD
53.	Procurement of 2000 gender sensitive slapped metal mono and dual desks for all basic KG and SHS schools and 800 No. tables and chairs for basic school.	Municipal-wide							2,600,000.00		850,000.00			GES	MA
54.	Undertake District Response Initiatives on HIV/AIDS, Malaria, Rabies, NIDs and their related activities .	Municipal-wide							102,356.00 ^{CF}					MHD	MA
55.	Roofing of Dinning hall,2 unit classroom storey building at	Aburi Presby Secondary Technical School							500,000.00 ^{C F}					MWD	MA,GES
SUB-TOTAL									17,133,280.46	1,099,025.00	4,337,620.00	22,569,925.46			

OBJECTIVE: 1. Improve efficiency and effectiveness of road transport infrastructure and services 2. Promote sustainable spatially integrated development of human settlements. 3. Enhance institutional capacity and coordination for effective climate action

PROGRAMME: ENVIRONMENT AND HUMAN SETTLEMENT DEVELOPMENT

S/N	PROJECTS/PROGRAMMES	LOCATION	TIME FRAME				COST						PROGRAMMES STATUSES		IMPLEMENTATION INSTITUTION/DEPARTMENT	
			Q 1	Q 2	Q 3	Q 4	GoG			DACF	IGF	OTHERS GPSNP DACF/RFG, SIF, MAG	NEW	ONGOING	LEAD	COLLABORATING
							CENTRAL GOV'T TRANSFERS	GET FUND	DEPARTMENTAL TRANSFERS							
56.	Identification and Sensitization of flood prone communities, schools, mosque, churches, market places and organize cleanup exercises, desilting of choked gutters and major drains and awareness creation on flood prevention	Municipal-wide								48,000.00	2,700.00				NADMO	Zoom lion, EHU DVGs, MDCs, Assembly members, GMA, NCC E
57.	Prepare and update 6 No. planning schemes and 2 maps for selected communities	Aburi, Ahwerese, Peduase, Adamorobe, Gonten, Pokrom								35,000.00	85,000.00	10,000.00			MA/PPD	MA
58.	Promote and undertake public education on climate change, mitigation measures and fire prevention in the communities and schools across the municipality	Municipal-wide								35,000.00					NADMO,	GNFS, MAD and all stakeholders
59.	Organize stakeholders fora to	Municipal-wide								20,000.00		1,000.00			NADMO,	MA GPS

	address and eradicate the issues of Sandwinning in the various communities														GIS and stakeholders
60.	Conduct fire safety inspection , training and education programmes on domestic and busfires at public/private schools/ market centres/healthcare/Religious/ Financial & Government institutions and for DVGs and DVCs	Municipal-wide							30,500.00	7,000.00	10 ,000.00			GNFS	MA, NADMO, GES, GHS, Public/Private Sch.,
61.	Reshaping and spot improvement of selected roads across the Municipality	Yaw Duodu Ketase Abrewakrom Kwasicrom-Okotom Berekuso							500,000.00	150,000.00				MWD	MA, Assembly Members,
62.	Reshaping and construction of culverts	Dago-Fahiakor-Mentukwa									1,800,000.00D ACF/RFG			MWD	MA, Assembly Members,
63.	Rehabilitation of Yaw Duodu -Kobiso Feeder Road(3.9KM) and Adjenase Piem-Odumsisi (3.0KM), Pepawani to Asuwotwe(3.1km)	Yaw Duodu-Kobiso and Adjenase Piem-Odumsisi Pepawani to Asuwotwe									441,603.30 450,000.00 436,625.57 GPSNP			GPSNP	MA,MWD
64.	Embark on routine road safety campaigns(traffic regulations, etc) including the activities of Okada	Municipal wide							1,500.00 ^{CF}					GPS	MA

69.	Undertake education programmes on the duties of the GIS including monitoring of foreign nationals & intelligence gathering, companies, schools & hotels and processing of passport/extension, work and residence permit.	Municipal-wide							12,000.00					GIS	Trad. Authorities, BNI, MA
70.	Organize stakeholders fora to address and combat the issues of Chieftaincy disputes and indiscriminate sale of lands and other related activities in the various communities.	Municipal Wide							40,000.00					Core Mgt	Other relevant stakeholders
71.	Enforce the use of farm lands for agricultural activities and discourage the sale of lands for estate developments.	Municipal wide							2,000.00	1000.00				MA	MAD PPD
72.	Support the Ghana Police Service to conduct swoops/patrols, community education and intelligence gathering	Municipal-wide							50,000.00 ^{CF}	20,000.00				GPS	MA, BNI, GNFS
73.	Support and complete community-initiated projects	Municipal-wide							280,000.0 ^{CF}		20,000.00			DA	Assembly Members, Traditional Authorities
74.	Procurement of office Furniture &	Central Admin.,							150,000.00		89,464.00	DACF/ RFG		MPU, Stores	MFO

	fixtures and fittings, equipment, computers, stationery and other related office Accessories	Aburi												MA	
75.	Purchase of Pick-up vehicle for works Department	Municipal assembly							300,000.00cf	400,000.00					
76.	Celebration of national/local anniversaries (to include Indep. Day, Senior Citizens' Day, May Day, int. girls day celebration, farmers day celebration, world disaster day Festivals etc.)	Central Admin., Aburi							90,000.00					MA	MA /NADMO, MAD
77.	Undertake and support Monitoring/Evaluation of programmes and projects and other related MPCU activities and statutory programs	Municipal-wide							350,000.00	150,000.00				MPCU, GPSNSP	MA GIZ
78.	Valuation of properties and Undertake DLREV and building foot prints user training to collect business data and update revenue and socio economic data base of the municipal.	Municipal-wide							30,000.00	60,000.00				MSD Revenue unit	PPD, M/A, b businesses & other revenue point, MBO, MSO GIZ
79.	Strengthen sub-structures and provide	Municipal-wide							99,000.00	25,000.00				MA/ PO, MPU	A/Cs, Assembly

	logistical support to Zonal Councils and training of area council members													Members, SWD, GIZ	
80.	Support to decentralized department of the assembly, traditional authorities and other related activities in the municipality	Municipal Assembly						50,000.00	80,000.00					MA	
81.	Maintenance of Municipal Assembly office buildings, delapidated sub structures. construction of bungalows for senior staff, Refurbishment of Municipal Assembly hall, and other structures, vehicles, Heavy duty trucks, insurance renewal and other related expenses.	Municipal Assembly Sub structures						414,252.96 cf 200,000.00 cf	260,000.00					MWD	Traditional Council, A/Cs
82.	Construction of a three -storey office Complex for Akuapim South Municipal Assembly	Aburi						4,701,561.8 3						MWD	MA
83.	Completion of offices for Departments of the Assembly	Aburi						700,000.00						MWD	MA
84.	Support and undertake staff and Assembly members capacity building training on (Local Government	ILGS, ASMA, Koforidua, All four Circuits.						100,000.00	4,000.00	200,400.00	DAC F/RFG			HR	MPCU, MPU, GIZ

	Protocols, Revenue mobilization, , Performance Appraisal preparation, SMART Report writing and minutes production and leadership, tranning on records keeping management, Occupational Hazard and Workplace Safety, PFM, LED, Public Procurement, Conflict resolution and management and provisions for external workshops													
85.	Sensitize various stakeholders on government policies, Assembly Bye-laws to enhance participatory development and planning through town hall meetings and community engagements, meet the press	Municipal-wide						364,000.00	185,000.00				MPCU	Assembly members, MA
86.	Organize mid-year and Annual Stakeholders review workshops on the Composite Budget, Annual Action Plan and PFM town hall	Municipal-wide						80,000.00	90,000.00				MPCU	Assembly members, MA, Traditional Authorities and other stakeholders
87.	Organize quarterly town hall meetings and Undertake	Municipal-wide						200,500.00					MPCU	Assembly members, MCE, MA,

	community visits engagements by Hon. MCE													Traditional Authorities and other Stakeholders
88.	Review of 2026 Annual Action Plan and Composite Budget and Preparation of the 2027 Annual Action Plan and Composite Budget, Revenue Improvement Action Plan(RIAP), Procurement Plan, Annual Audit Plan, Risk Based Plan and Fee fixing and Resolution of the Assembly.	Municipal Assembly						150,000.00	80,000.00				MPCU	MPCU,MA, MBU,Key trade associations, orga& other stakeholders
89.	Conduct social safeguards, Concept notes and ESIA for projects of the Assembly before implementation	Municipal wide						200,000.00	75,500.00	500,000.00			MPCU	MA
90.	Establishment of community sports parks/facilities	Kitase and Otiakrom							800,000.00					
SUB-TOTAL								10,822,601.99	2,250,500.00	789,864.00	13,862,965.99			
GRAND TOTAL								34,922,075.65	4,006,850.00	9,196,462.87	48,125,388.52			